

SmartLock MIFARE[®] Simple Proximity Access System

The SL900 system is a wire free, stand alone, program at the door system that uses Mifare proximity technology offering an easy to use, secure, access solution for small installations. It consists of the battery powered, door mounted lock and a mains powered unit to control an electric locking mechanism / lift etc..

■ SL900B Door Mounted Lock



Front



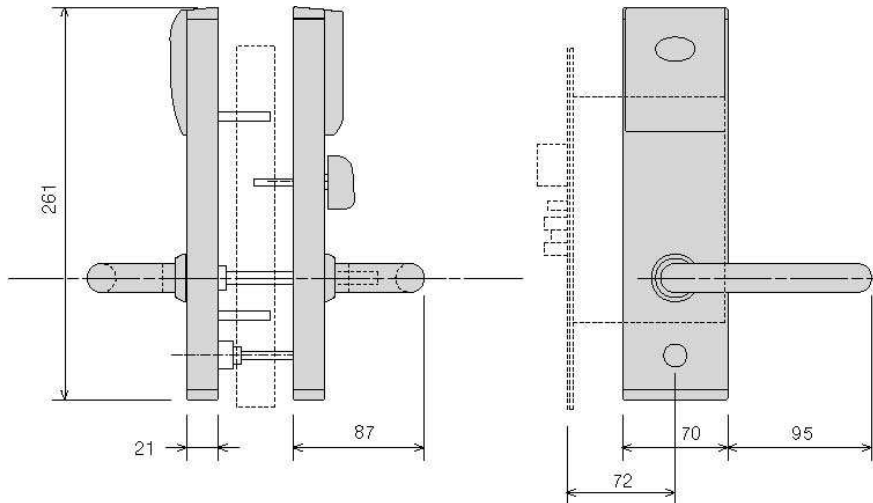
Rear

- Hotels
- Universities /schools
- Offices
- Hospitals
- Anywhere that simple, reliable card access is required

NO CONTACT—just put a programmed card to the lock to operate

The SL900B door mounted lock is a compact, self contained unit comprising of front and rear handles and the stainless steel mortice lock. The device simply bolts through the door and lockcase providing secure, reliable access control.

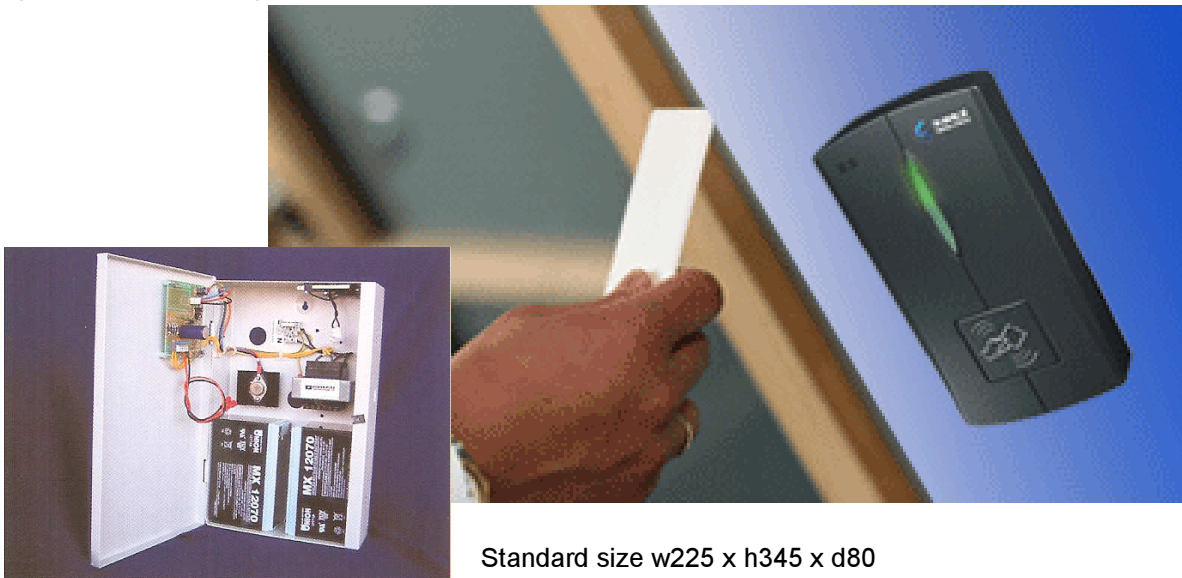
- No need to hardwire the building
- Simple and quick to install on new or existing doors
- Security of a high quality mortice lock
- Simple to add individual user cards at the door using a master programming card.
- Up to 200 user cards per unit
- Suitable for timber or metal doors from 35mm to 50mm thick
- ISO printable or pre-printed cards, tokens etc.
- Powered by 4 AA batteries
- Lever handle operation
- Low battery indicator
- Thumbturn from inside to throw security dead-bolt
- Lever handle from inside withdraws latch and deadbolt so that free escape is always possible
- Key override from outside
- External handle is weatherproof and suitable for external doors
- Handed for left or right hand applications (SL900.BXL/R)
- Available in brushed stainless steel (SL900.BSX) or brushed brass (SL900.BBX)



■SL900M Mains powered controller

A mains powered unit and Mifare reader to control electronic locking devices e.g. mag-lock, electric strike, electric lock ,lifts etc

- No need to hardwire the building
- Integral 2 Amp 12V power supply
- Battery back up
- Simple to add individual user cards at the door using a master programming card.
- ISO printable or pre-printed cards, tokens
- Up to 200 user cards per unit



Standard size w225 x h345 x d80

SmartLock

Intelligent Locking and Access Control Systems

SmartLock Access Control Ltd., 3A Thame Road, Long Crendon, Buckinghamshire HP18 9AS UK

Tel. +44 (0) 1844 20 11 45 Fax. +44 (0) 1844 20 11 55

E-mail: sales@smart-lock.co.uk Web site: www.smart-lock.co.uk

Registered Office :- The Old Star, Church Street, Princes Risborough, Buckinghamshire, HP27 9AA UK
 reg. No. 4112152 vat no. GB768 3770 81